



TECHNICAL SHEET



MJ500

Cod.: MP.0.159 US
Rev.: 1

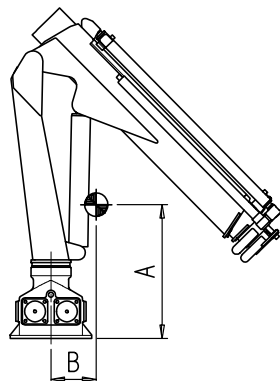
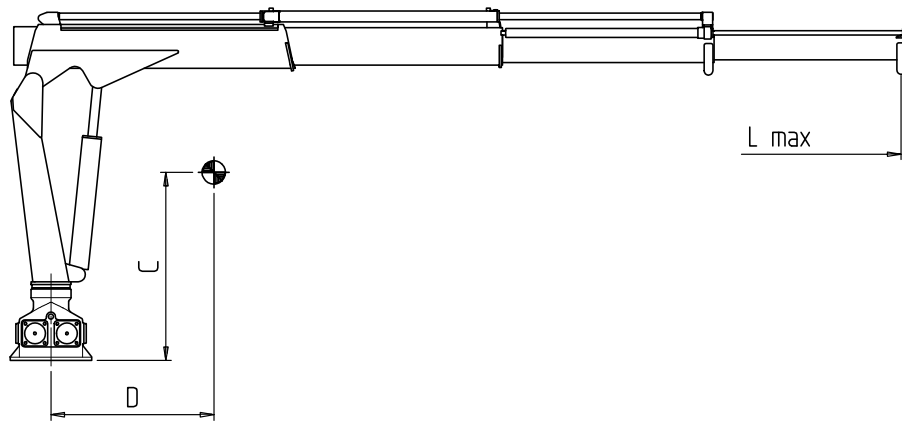
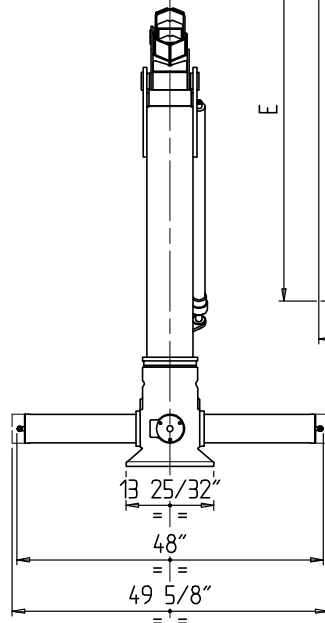
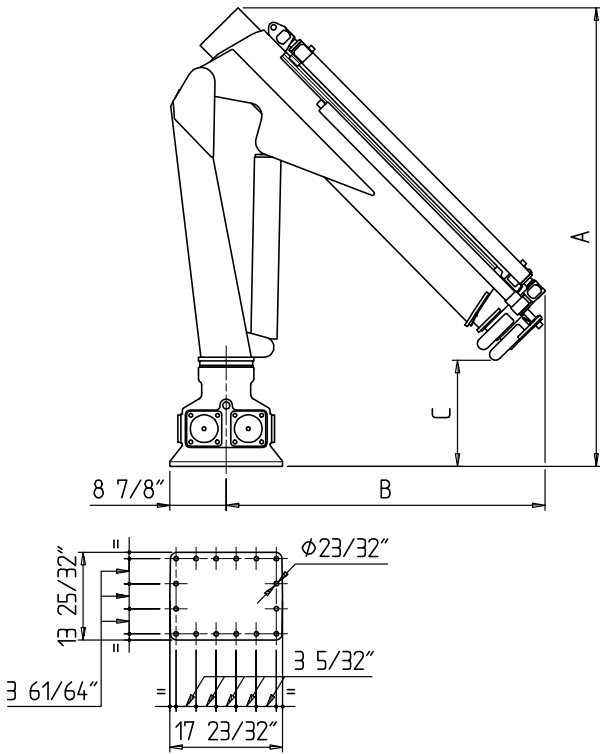
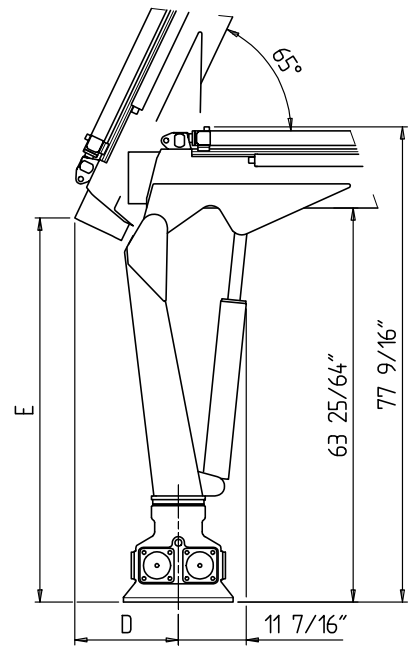


Next Hydraulics®
RAISE YOUR EXPECTATIONS



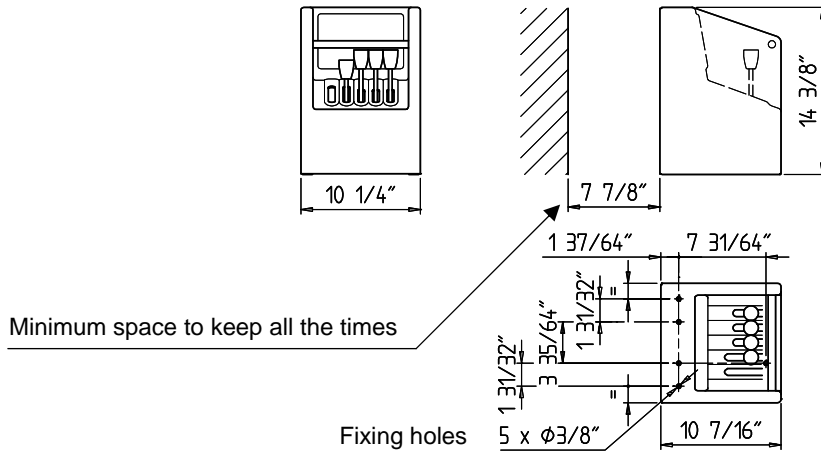
DIMENSIONS

CRANE	A	B	C	D	E
ML 500.2	72"	50 1/2"	18"	17"	61 1/2"
ML 500.3	72"	50 1/2"	16 1/2"	17"	61 1/2"
ML 500L.2	71"	57"	11"	16 1/2"	63"
ML 500L.3	71"	57"	9 1/2"	16 1/2"	63"
ML 500L.4	71"	58 3/4"	7 1/2"	16 1/2"	63"

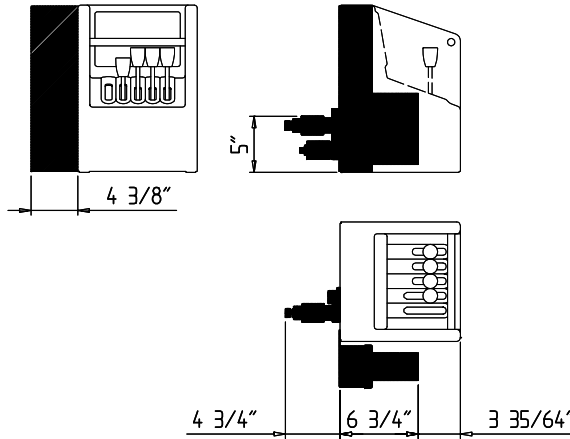


CRANE	A	B	C	D	L max
ML 500.2	28"	7 7/8"	36 1/4"	21 1/2"	143"
ML 500.3	28 3/4"	9 1/2"	38 1/2"	31 1/2"	185"
ML 500L.2	26 1/2"	10 1/2"	37 1/2"	29"	173"
ML 500L.3	27"	12 1/2"	40 1/4"	43 1/4"	226"
ML 500L.4	27 1/2"	14 1/4"	41 3/4"	54"	269"

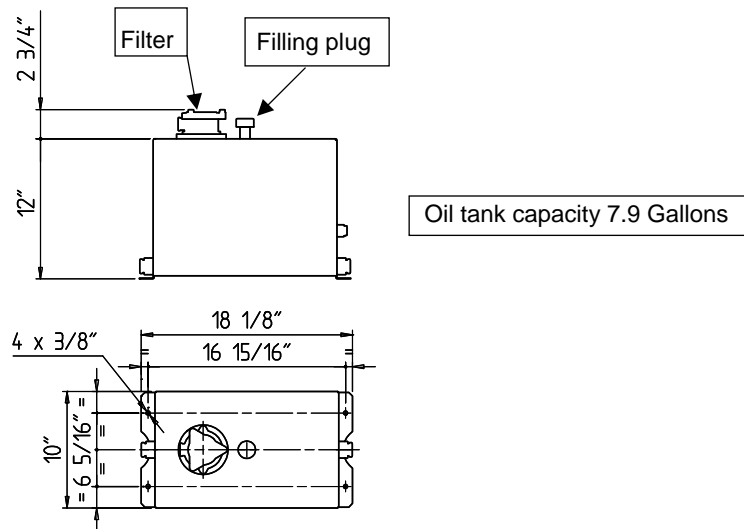
Standard control station



Control station with remote control



Oil tank



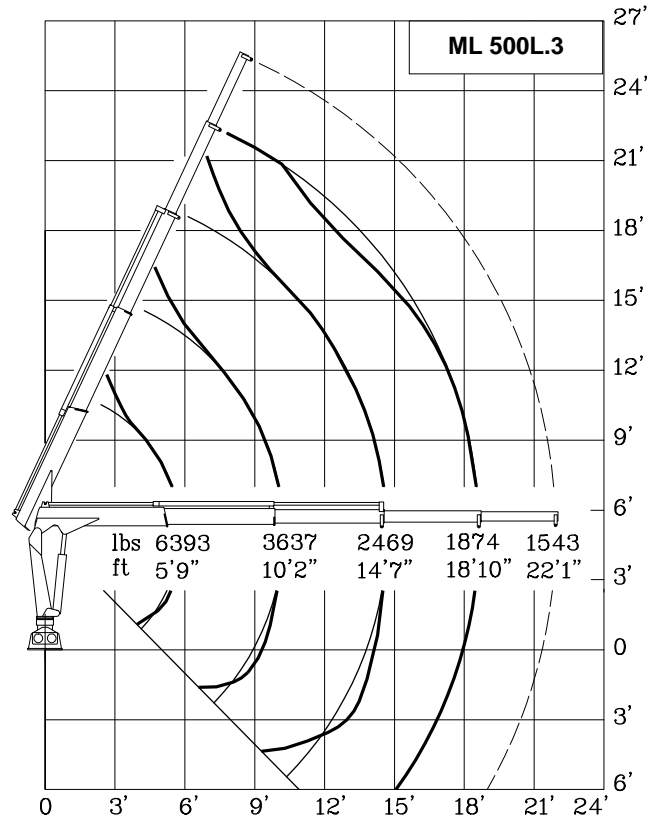
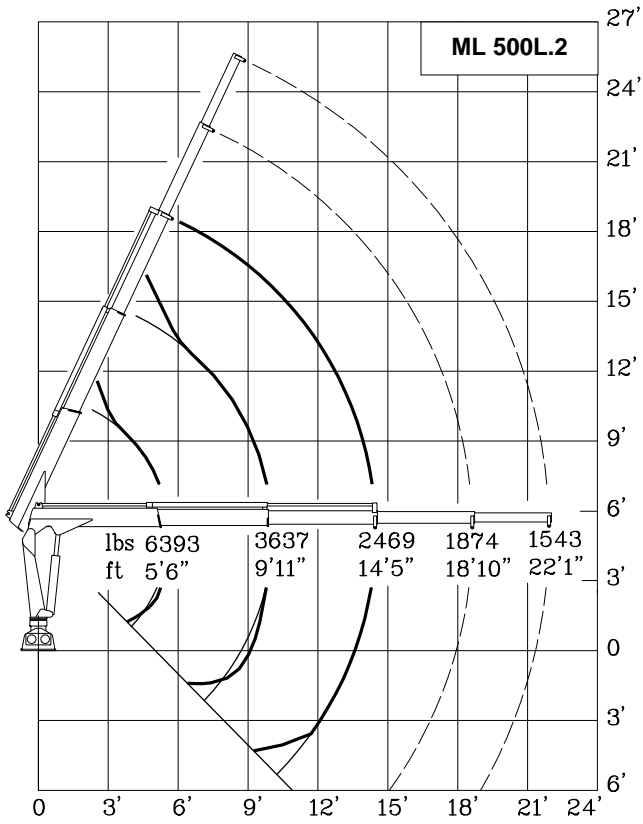
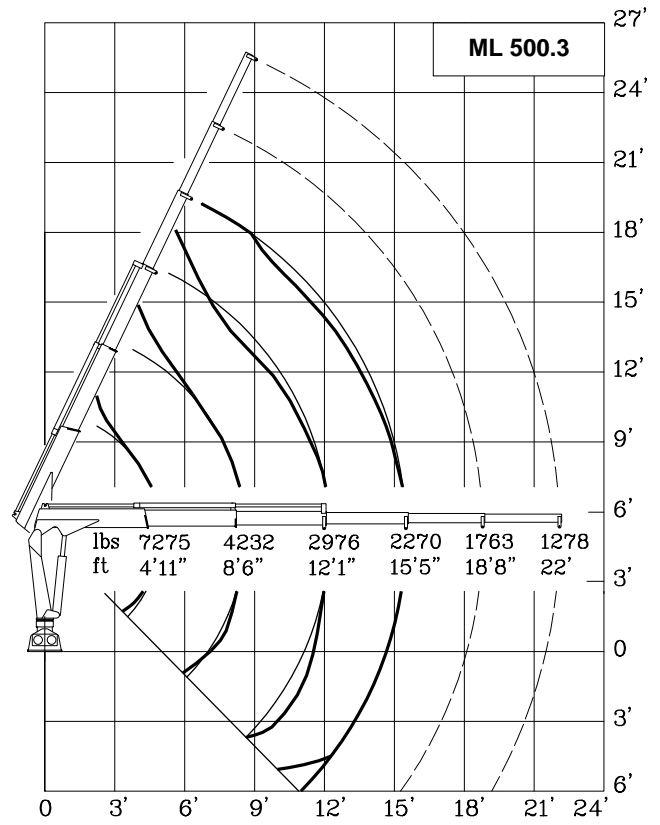
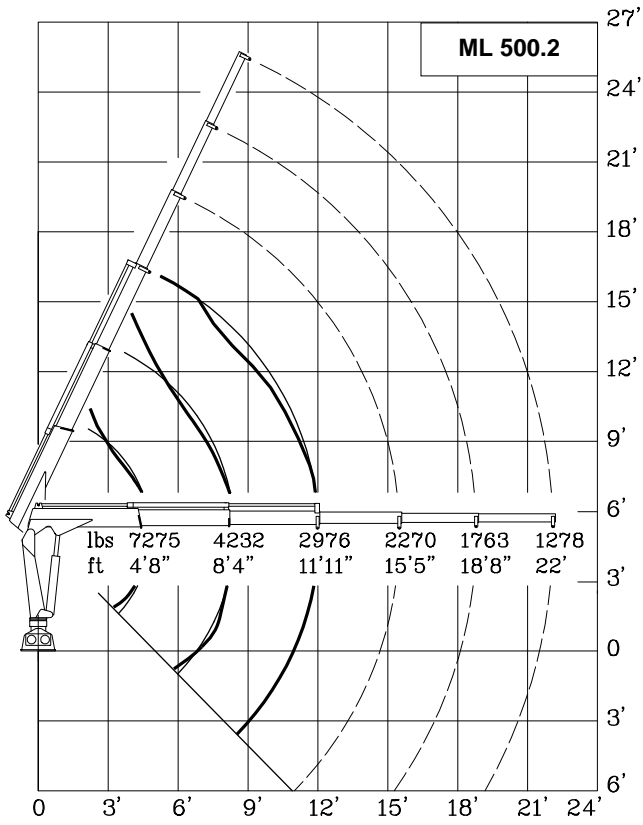
TECHNICAL DATA	U.M.	VERSION				
		ML 500.2	ML 500.3	ML500L.2	ML 500L.3	ML 500L.4
CRANE RATING	ft lbs	35400				
STANDARD EXTENSIONS Nr (HYDRAULICS)	N°	2	3	2	3	4
STANDARD OUTREACH	ft	11' 11"	15' 5"	14' 5"	18' 10"	22' 5"
SLEWING ANGLE	°	360°				
MAXIMUM ANGLE SLOPE	°	15°				
SLEWING TORQUE	ft lbs	11800				
MAX. LIFTING HEIGHT FROM CRANE BASE	ft	15' 11"	19' 2"	18' 4"	22' 5"	24' 7"
SUGGESTED OIL FLOW	gpm	4÷4.8				
MAX. WORKING PRESSURE	p.s.i.	3335				
BASIC CRANE WEIGHT	lbs	1035	1125	1100	1210	1280

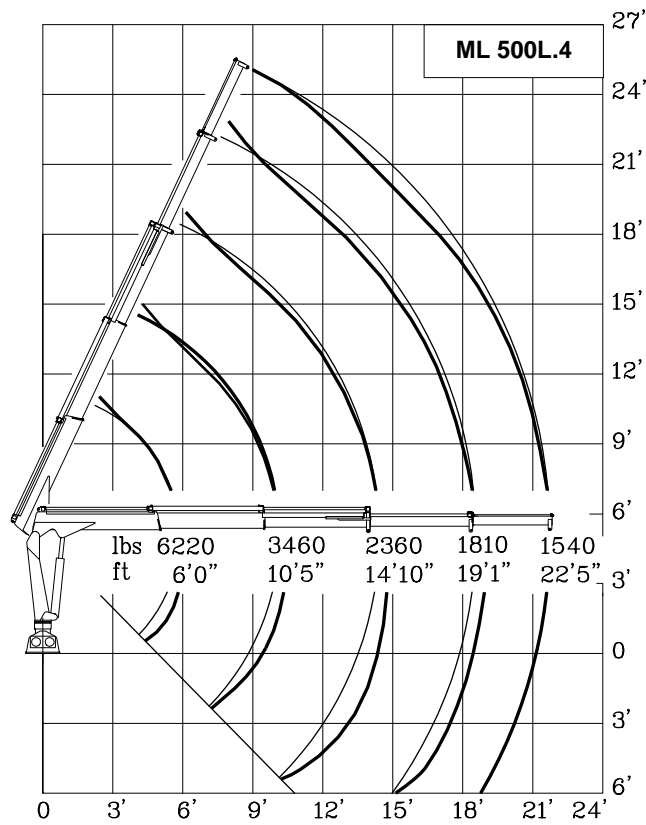
WINCH SPECIFICATIONS	U.M.	
MAX. WINCH SINGLE LINE CAPACITY (3 rd LAYER)	lbs	2200
ROPE RAISING SPEED (3 rd LAYER)	ft/min	49.2
ROPE LOWERING SPEED (3 rd LAYER)	ft/min	65.6
ROPE DIAMETER	inches	5/16"
ROPE LENGTH	ft	98' 5"
WINCH KIT WEIGHT	lbs	165

OPERATING TIMES												
SLEW. (rpm)	LIFTING (sec)	LOWER. (sec)	EXTENSION OUT (sec)					EXTENSION IN (sec)				
			500.2	500.3	500L.2	500L.3	500L.4	500.2	500.3	500L.2	500L.3	500L.4
			2.3	13	11	17	22	20	31	36	10	12

Winch versions: Maximum lifting capacity 2200 lbs, in single pull line; outreaches unchanged.

Stabilizers: Refer to models 1 EMO/1EHO or 1 EMA/1 EHA on MAXISTAB catalogue.





Lifting class **HC1 – HD4/B3**