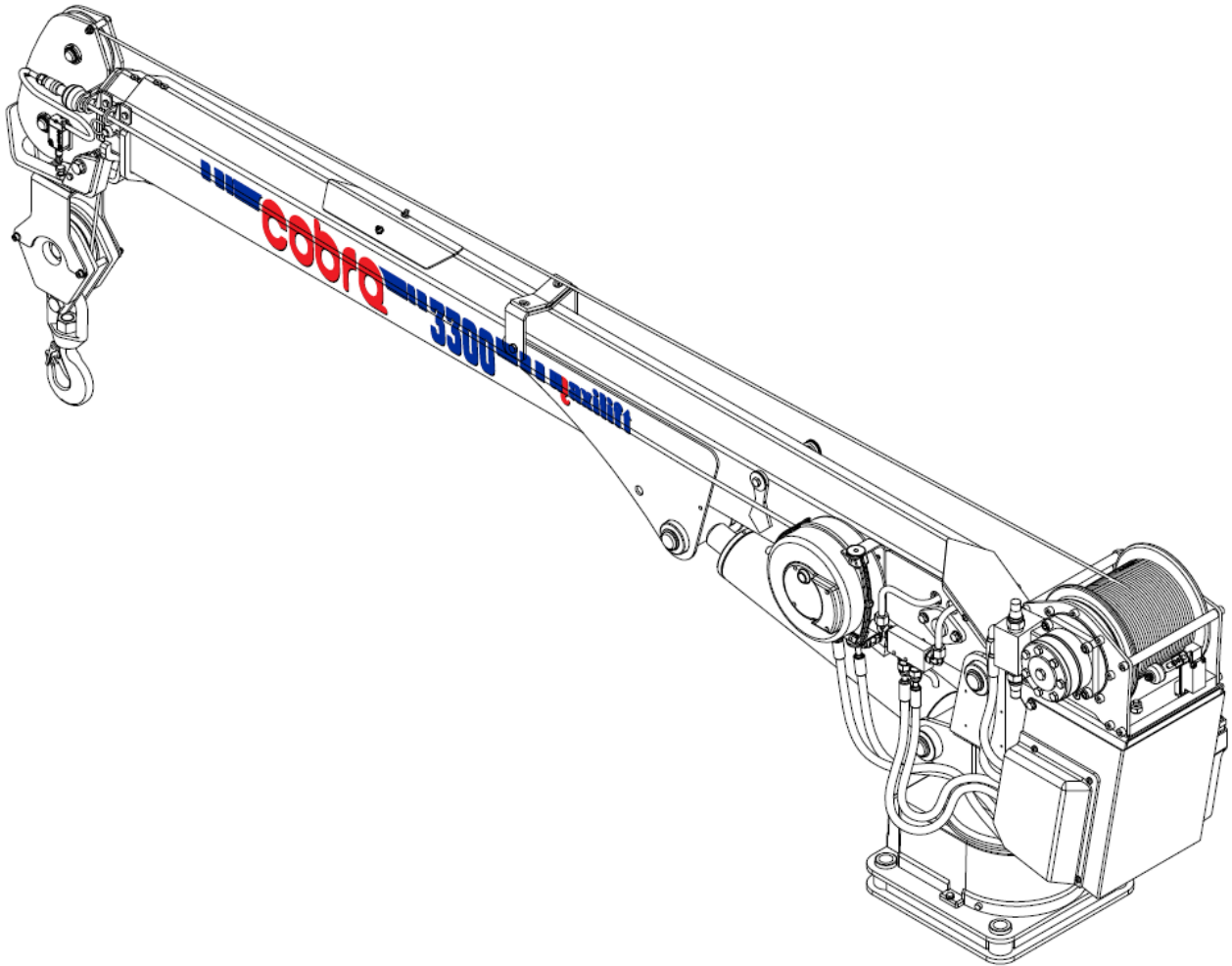


maxilift 3300 cobra

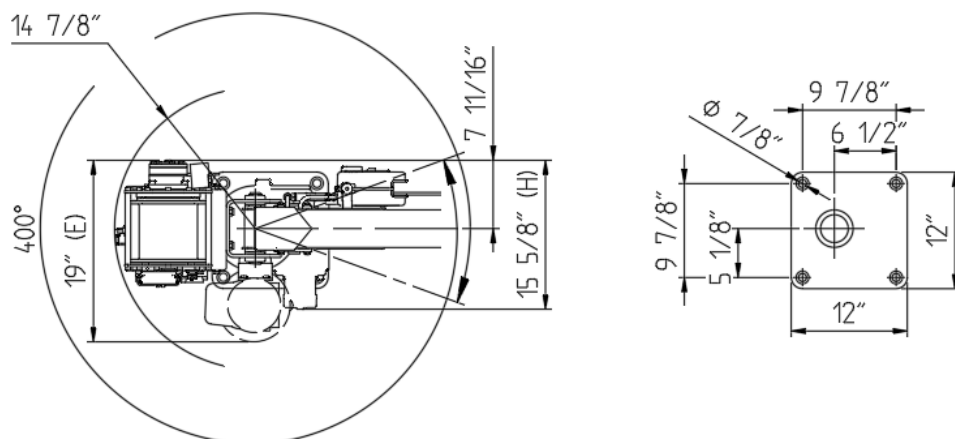
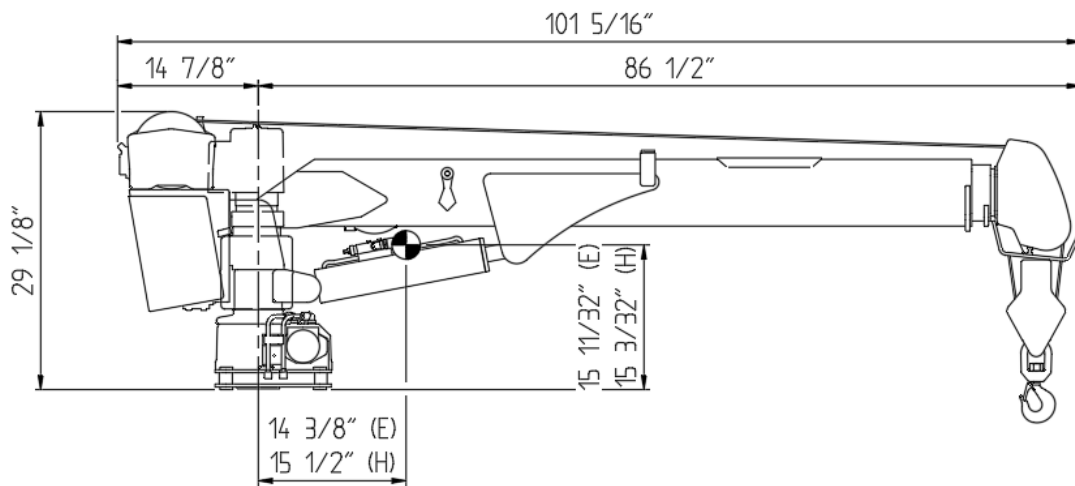
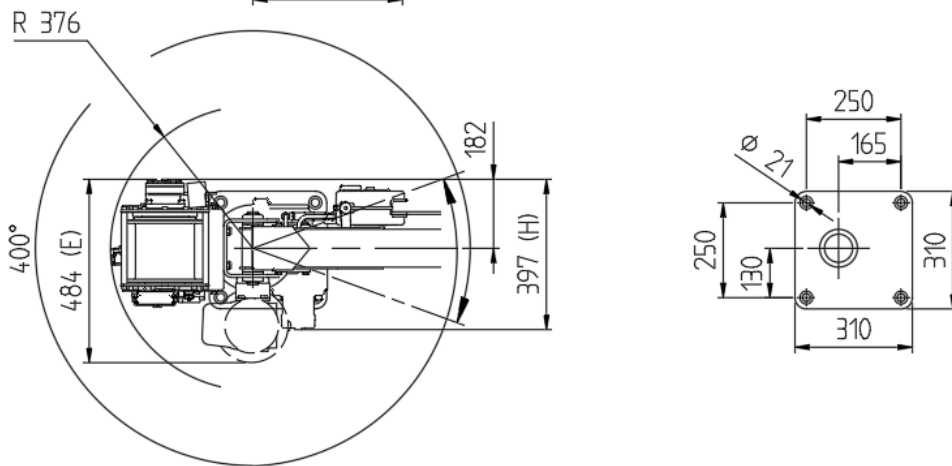
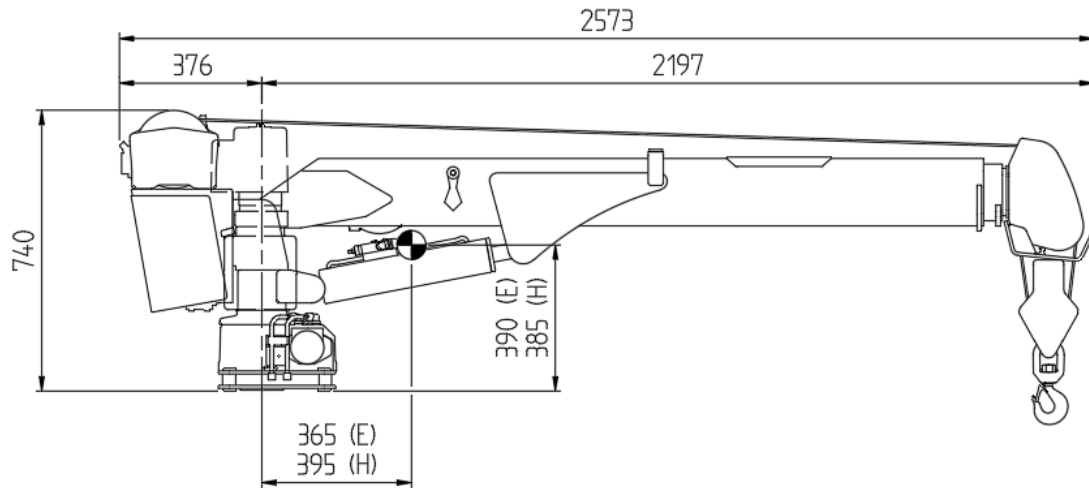


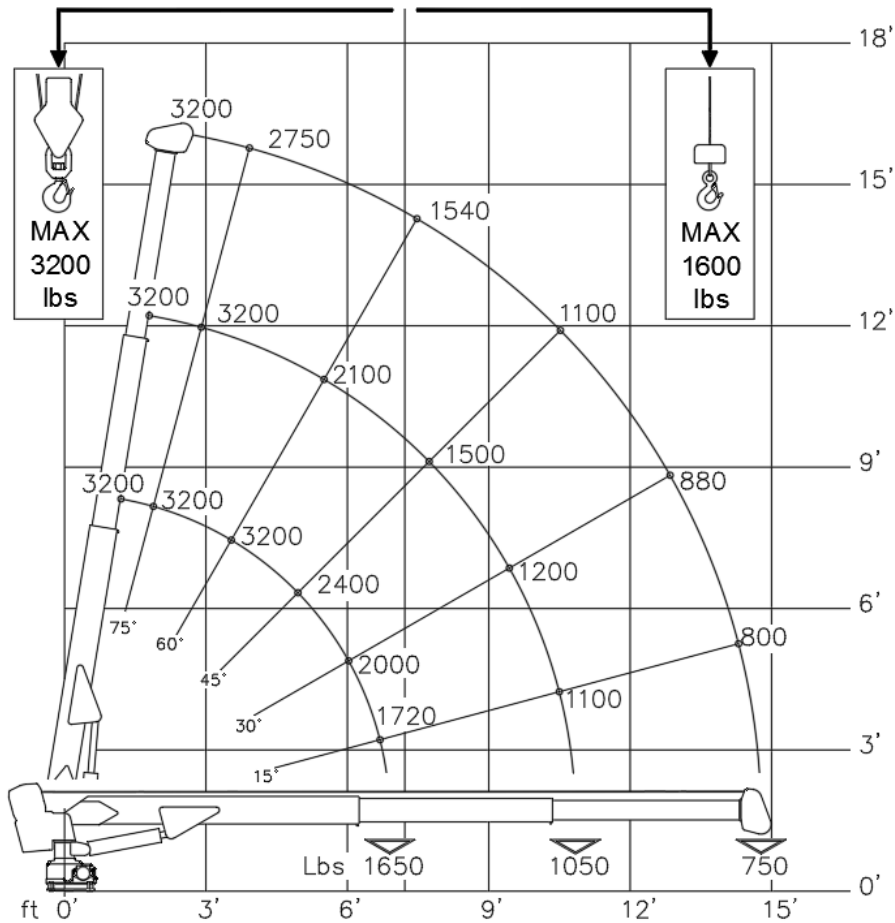
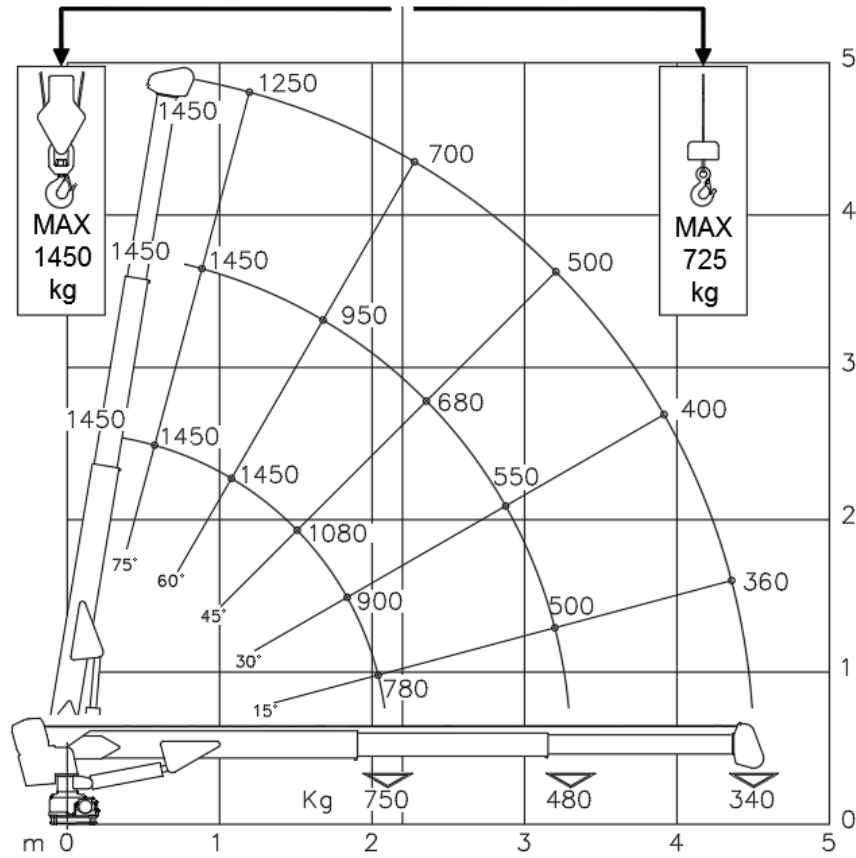
TECHNICAL SHEET

MP.0.202
Rev. 0



Next Hydraulics[®]
RAISE YOUR EXPECTATIONS





TECHNICAL DATA		Cobra 3300
CRANE RATING	kNm ft.lbs	16 11500
EXTENSIONS TYPE		1 HYDRAULIC + 1 MANUAL
HYDRAULIC EXTENSION	m ft	1.2 4'
MANUAL EXTENSION	m ft	1.2 4'
HORIZONTAL REACH (from center line of rotation)	m ft	4.5 15'
LIFTING HEIGHT FROM BASE OF CRANE	m ft	4.5 15'
SLEWING ANGLE	°	400°
SLEWING TORQUE	kNm ft.lbs	1.6 1180
BOOM ELEVATION ANGLE	°	-5°/ +80°
MAX. WORKING PRESSURE	bar psi	160 2320
SUGGESTED OIL FLOW (H version)	l/min gpm	10 2.7
OIL FLOW (E version)	l/min gpm	5 - 9 1.3 - 2.4
CRANE WEIGHT (H version)	kg lbs	230 510
CRANE WEIGHT (E version)	kg lbs	250 550

WINCH SPECIFICATIONS		
WINCH SINGLE LINE CAPACITY (1 ST layer)	kg lbs	727 1600
WINCH DOUBLE LINE CAPACITY (last layer)	kg lbs	1450 3200
WINCH PULL LINE SPEED (last layer – H version)	m/min ft/min	11 36
WINCH PULL LINE SPEED (last layer – E version)	m/min ft/min	5.5 - 10 18 - 33
WIRE ROPE DIAMETER	mm in	6 1/4"
WIRE ROPE LENGTH	m ft	25 82'





